



GutterLock

D♦I♦A♦M♦O♦N♦D / *Elite* / EXTREME FLOW

Installation Manual

GutterLock Enterprises, LLC
10651 Chandler Rd. Ste 103
LaVista, NE. 68128
Toll Free: 855.932.1557
FAX: 402.934.7671
www.mygutterlock.com



*Complete installation videos are also available on our website.
Call GutterLock for login information.*



GutterLock

Elite / EXTREME FLOW

Table of Contents

1. Required equipment.
2. Determining Suitability for Installation.
3. Different Components of GutterLock.
4. Determining Materials Needed and Estimating Cost of Installation.
5. Installation of GutterLock - Straight Sections and Interlocking Panels.
6. Installation of End Caps.
7. Installation of Inside Corners
8. Installation of Water Diverters.
9. Installation of Outside Corners.
10. Disclaimer of Liability.



1. Required Equipment

- Pencil or Sharpie marker
- Tape Measure
- Putty Knife
- Screwdriver
- Cordless Drill/Driver
- ¼ Magnetic cap – screw bit
- 3” Hand Brake
- Levels
- Caulk Gun
- Speed Square
- Gloves (cut resistant)
- Sheet Metal Snips
- Utility Knife with hood blade and regular blade
- Ladders with adjustable legs for homes built on slopes. Large ladders for two-story homes.



The **GutterLock** system can easily be installed with common home improvement tools as noted above. More complex installations will require additional tools such as ladders, planks and a siding brake. When calculating a bid for the homeowner, keep in mind a single-story house with a flat roof has less labor than a two-story house with shake shingles. Be sure to account for the difference in your bid estimates. If you need to lower gutters or cut back shingles to expose the Z bend, add cost accordingly.



1. Required Equipment (cont'd)

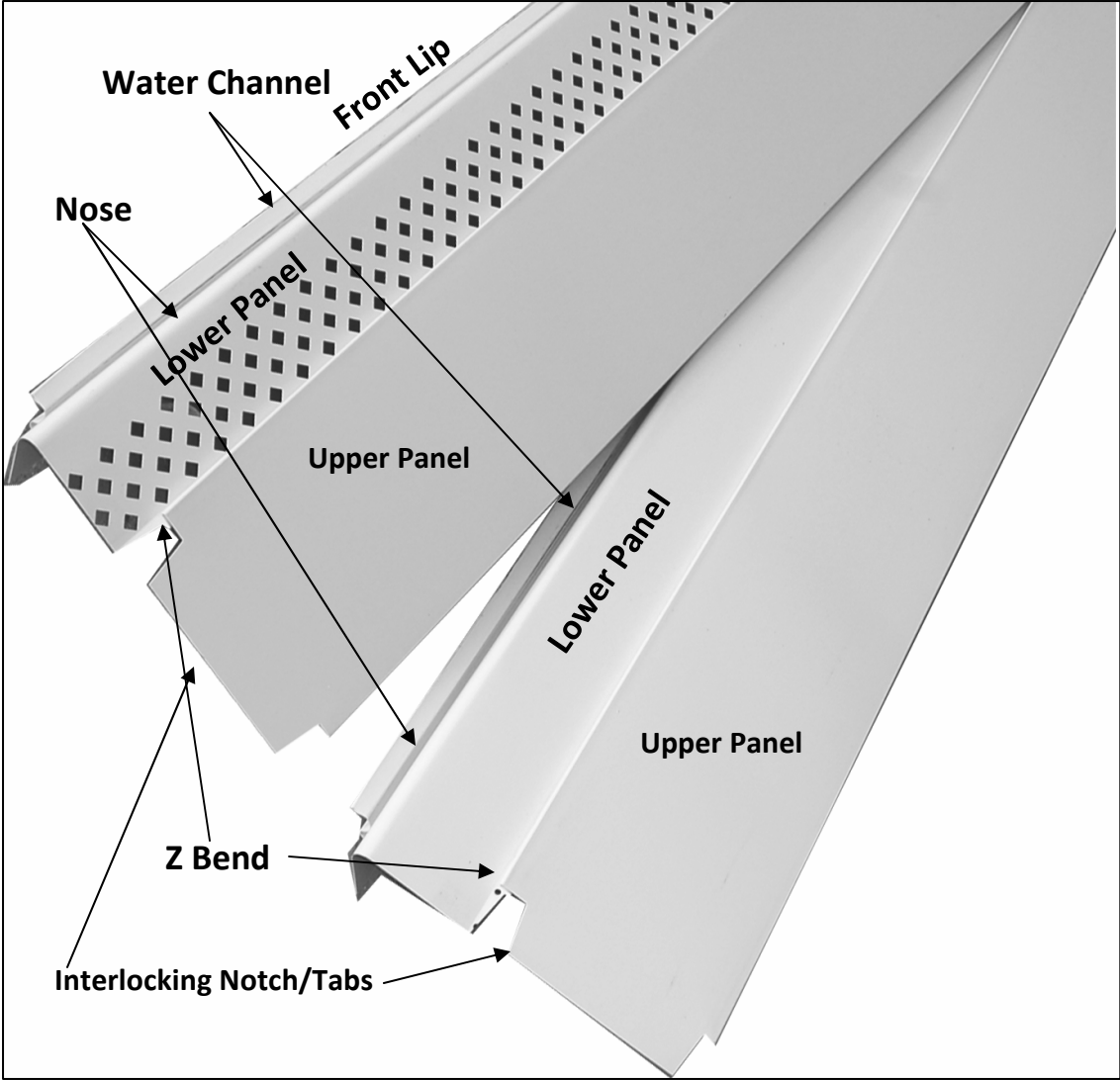
- ❑ Check gutter for stability. The gutter should be properly secured to the fascia board. Check for any damage to existing gutter. If so, it may be necessary to add new style gutter hangers to existing gutter to stabilize the gutter. There may be an opportunity to offer installation of a new gutter system.

- ❑ Take a sample piece of GutterLock and put it between starter row and first row of shingles to ensure proper pitch.
 - Be sure to install GutterLock with a **forward slope** of 5 to 15 degrees. In some cases, the gutter may need to be lowered for required slope.
 - **IMPORTANT**: If the panel slopes back towards the roof, several problems may develop. Leaves and debris will collect on the panel. Water might collect on the panel and seep under the roof between the gutter and soffit.

- ❑ Check and make sure the Z bend is not overlapping by the shingle. If it is, cut back the shingle to expose the Z bend. This may add additional labor costs to the job.
 - **The Z bend MUST be exposed a minimum of 3/8" below the shingle line.** Shingles may need to be trimmed back or modified.



3. Different Components of GutterLock



4. Determining Materials Needed and Estimating Cost of Installation.

- GutterLock Footage – Length of gutters.
- How many inside corners and outside corners are needed (the more corners, the more labor – charge accordingly).
- Number of diverters needed (i.e., inside corners are for high flow areas, valleys, upper roof dumping water onto lower levels).
- Number of inside miters needed for inside corners.
- Number of Extreme Flow Panels – 2 per inside corner and usually 1 for high flow areas such as where a downspout is draining onto the roof.
- Number of end caps (left and right).
- Color of GutterLock – most people prefer the same color as their gutters.
- Important: Before you start any installation, you have to clean out all debris from existing gutters (bring trash bags). It is recommended to reseal gutter end caps by using silicone caulking to prevent leaking of end caps on gutters.



5. Installation of GutterLock

Straight Sections

It is always important to measure each section of gutter. This ensures that you know how many panels to lay out. Note: when you get to the end of the gutter section, the last piece needs to be at least 15" long for stability of the GutterLock. You may need to start off with a shorter 2 ft. piece to achieve this. This is why it is important to measure lengths of the gutter sections.

Step 1. Install from right to left. First panel - cut off interlocking end tabs. The first panel should always start with the roof line to ensure proper fit of the end caps.



Step 2. Install panel in between the starter strip and first row of shingles to ensure you do not hit nails.



5. Installation of GutterLock (cont'd.)

Interlocking GutterLock Panels

Install first piece. Begin interlocking the section of **GutterLock** by slipping upper panel tab under the upper panel to the right. The nose of the lower panel will go over the lower panel. Leave 1/8" gap for expansion.

Use 3 self-tapping screws per panel – one on each end of the panel about 1" to 2" from the end and one in the middle. Do NOT over tighten screws.

At the end of a gutter section, make sure to stop GutterLock at the end of the roof line. **Important:** sometimes the gutter will extend past the roof line. Do NOT run all the way out. Stop at the roof line.

NOTE: Extreme Flow installs just like the GutterLock Elite panels.

Extreme Flow is designed for high flow water areas such as metal, slate tiles, and cedar shake roofs.

A diverter may be needed on top of an Extreme Flow panel for high-pitched roofs with slick roofing material, or you may choose to install **GutterLock Extreme Flow** on the entire roof. See Inside Corner Section for Diverter instructions.



6. Installation of End Caps

Place prefabricated end cap on panel section with lower section inside the gutter. Take a sharpie or pencil and mark the wings for bending.

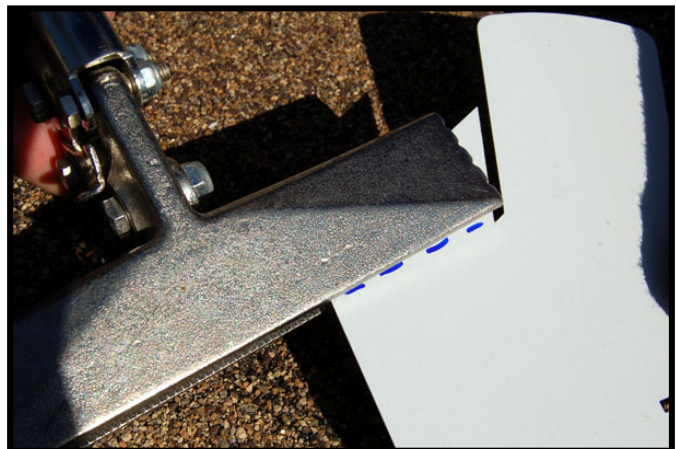
Using hand brake, bend to 90 degrees.

Slide end cap back on the panel and in between shingles (same as the GutterLock panel installation).

Use two self-tapping zip screws. Tighten down.

Take prefabricated end cap at bottom of the slot with the hand break and bend to a 90 degree angle. Remember the bend will go the opposite way of the color side.

If installing on a 5" gutter, then bend the bottom portion at a 90 degree angle the opposite way of the color side.



6. Installation of End Caps (Cont'd)

How to plate (cover) if gutter is running past roofline

If you have a gap between End Cap and the end of the gutter run, use a piece of scrap panel and plate it.

If you have a gap too big on the backside of the gutter, use a piece of scrap panel and plate it.



Possible areas where a gap can cause bird and rodent access.

Important: Be sure there are no gaps big enough for birds or rodents to access the gutter.

7. Installation of Inside Corners

Use two Extreme Flow panels to create an overlapping corner.

On the first panel, (right to left), place an Extreme Flow panel on the gutter as shown. Mark the lip of the panel as shown.

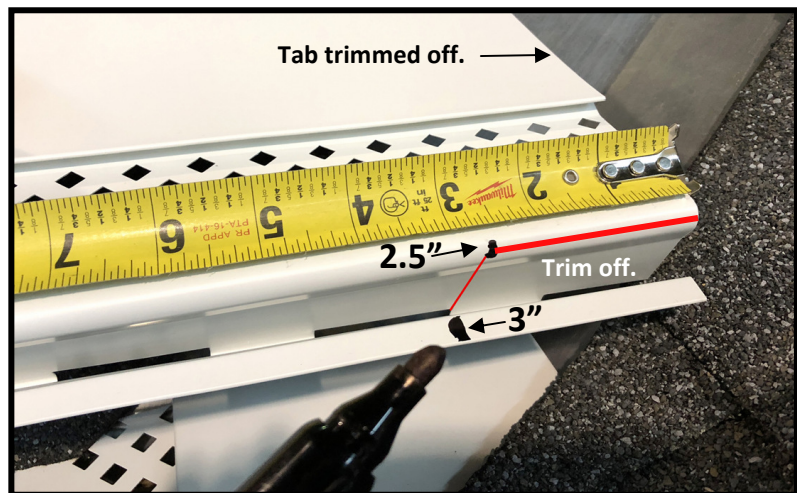


Remove the panel and trim the front lip and tabs from the edge of the panel as shown. Replace the panel and use 3 zip-screws to attach the panel to the lip of the gutter.



Next, trim the screw-tabs from the right end of the left side panel, then mark the nose of the panel 2-1/2" from the right end. Then mark the lip of the panel at 3".

Trim the panel nose and front lip as shown.



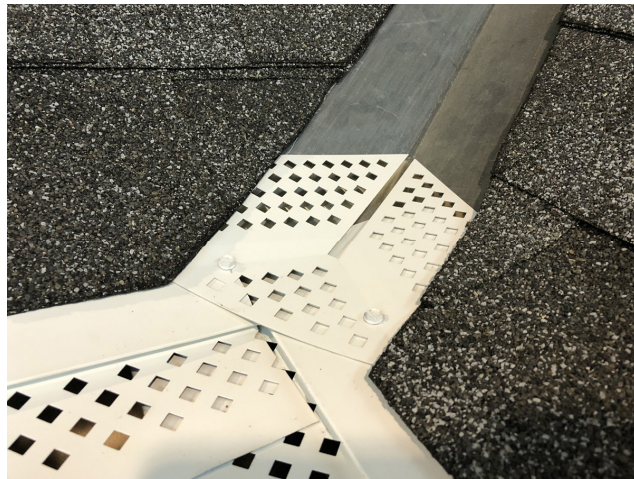
7. Installation of Inside Corners (Cont'd)

Slide the panel under the shingles and butt the panel against the right panel as shown.

Attach the panel to the gutter using 3 zip-screws.



Install the inside miter piece as shown using 2 zip-screws.



8. Installation of Water Diverters

All high flow areas on a roof that run into a gutter need a water Diverter on top of **GutterLock**. All inside corners and any valleys running into a straight run of gutter need a Diverter. Any second story downspout dumping water onto first story roof might require a Diverter. Always bend any Diverter so water will channel back to the center of the Diverter and water will drop into the diamond cut holes.

Inside Corner:

Using a prefabricated Diverter, set at 110 degrees so water will channel back to the corner.

Screw down with self-tapping zip screws.



9. Installation of Outside Corners

Measure from last panel on the right, to the outside lip of the gutter as shown.



Measure from the right end of the panel to be installed, BUT not including the screw tab, as shown.

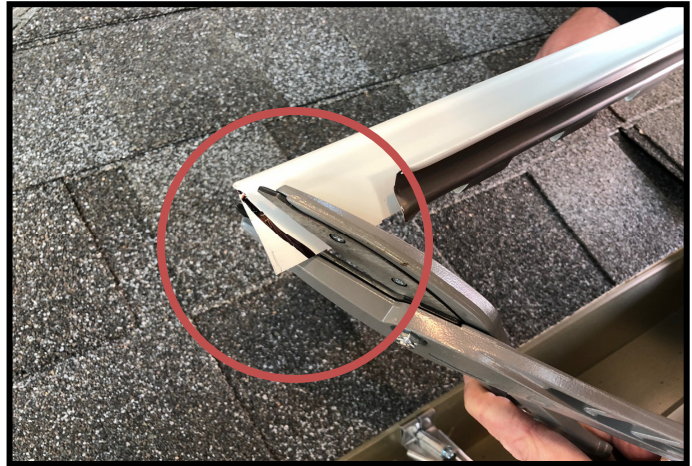


Mark the nose of the panel for your length, and using a roofing square, mark the panel at a 45 degree angle for trimming. The front lip screw rail will need to be trimmed by about an additional 1" – 1-1/2" as shown.



9. Installation of Outside Corners (cont'd)

After trimming the panel, an additional corner needs to be trimmed as shown to allow proper fit.



The panel may need to also be trimmed as shown to allow clearance for the ridge cap nails.



Place the panel in place under the first row of shingles, interlocking the right side tabs with the previous panel, and attach to the gutter using 3 zip-screws.



9. Installation of Outside Corners (cont'd)

For the left side of the corner, mark the next panel at a 45-degree angle.



Trim the 45-degree angle and about 1-1/2" of the front screw rail as shown.



Mark and trim the corner of the panel as shown.

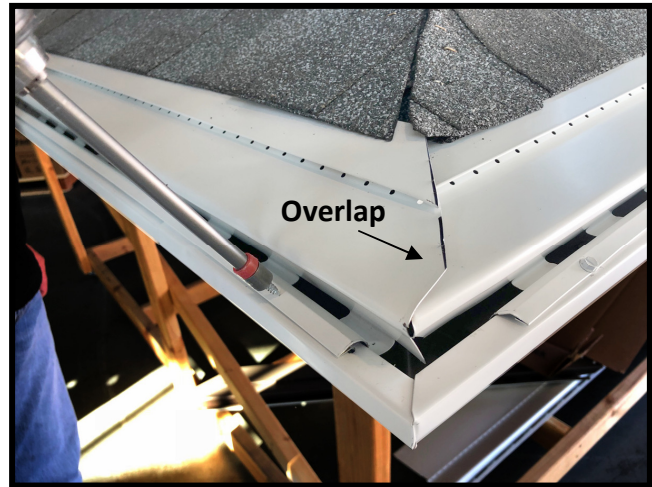


9. Installation of Outside Corners (cont'd)

Slip the panel under the first row of shingles and slide against the right side panel.

Overlap the left panel on top of the right panel.

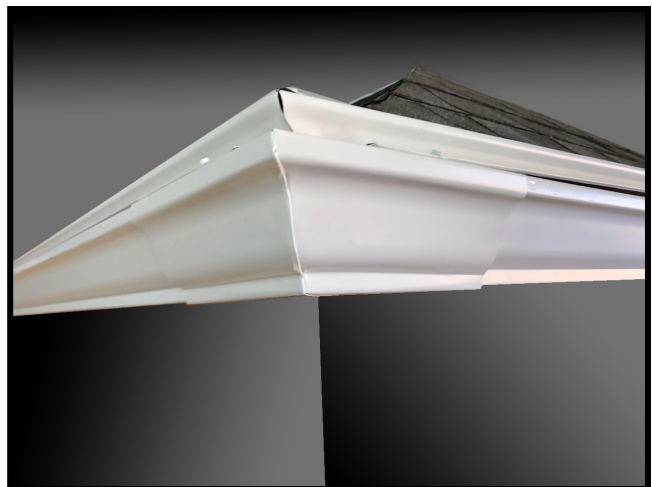
Attach to the gutter with 3 zip-screws.



Attach the left panel to the right side using 2 zip-screws.



View of the finished outside corner from ground level:



10. Disclaimer of Liability

GutterLock is a partner company of GutterLock Enterprises, LLC.

This manual contains the most current and precise information possible for GutterLock.

The information and data included in this installation manual, along with other installation materials packaged in boxes of GutterLock products, have been compiled by the GutterLock staff and are subject to change without notice.

Inadvertent errors in information may occur. GutterLock and GutterLock Enterprises, LLC, disclaim any responsibility for typographical errors and accuracy of the information that may be contained in this manual.

GutterLock and GutterLock Enterprises, LLC, make no warranties or representations regarding the quality, content, completeness, accuracy, and timeliness of such information and data.

